



Sculptures and drawings - Inger Sannes 2013

Sandefjord and Oslo, Norway, Edsvik and Landsort, Stockholm, Sweden and Pietrasanta, Italy



Inger Sannes

Inger is born in Sandefjord/Tjølling Norway and lives since 18 years in Stockholm, Sweden and Pietrasanta, Italy

She creates her sculptures at Studio Sem in Pietrasanta

Inger is member of Billedhuggerforeningen (The Sculptor Association), Norway, Skulptörförbundet and KRO (Konstnärernas Riksförbund), Sweden and The Royal British Society of Sculptors, England

www.inger-sannes.com

Photo above, Sebastiano Leta and
Photo, front page, Stefano Barolo, Italy

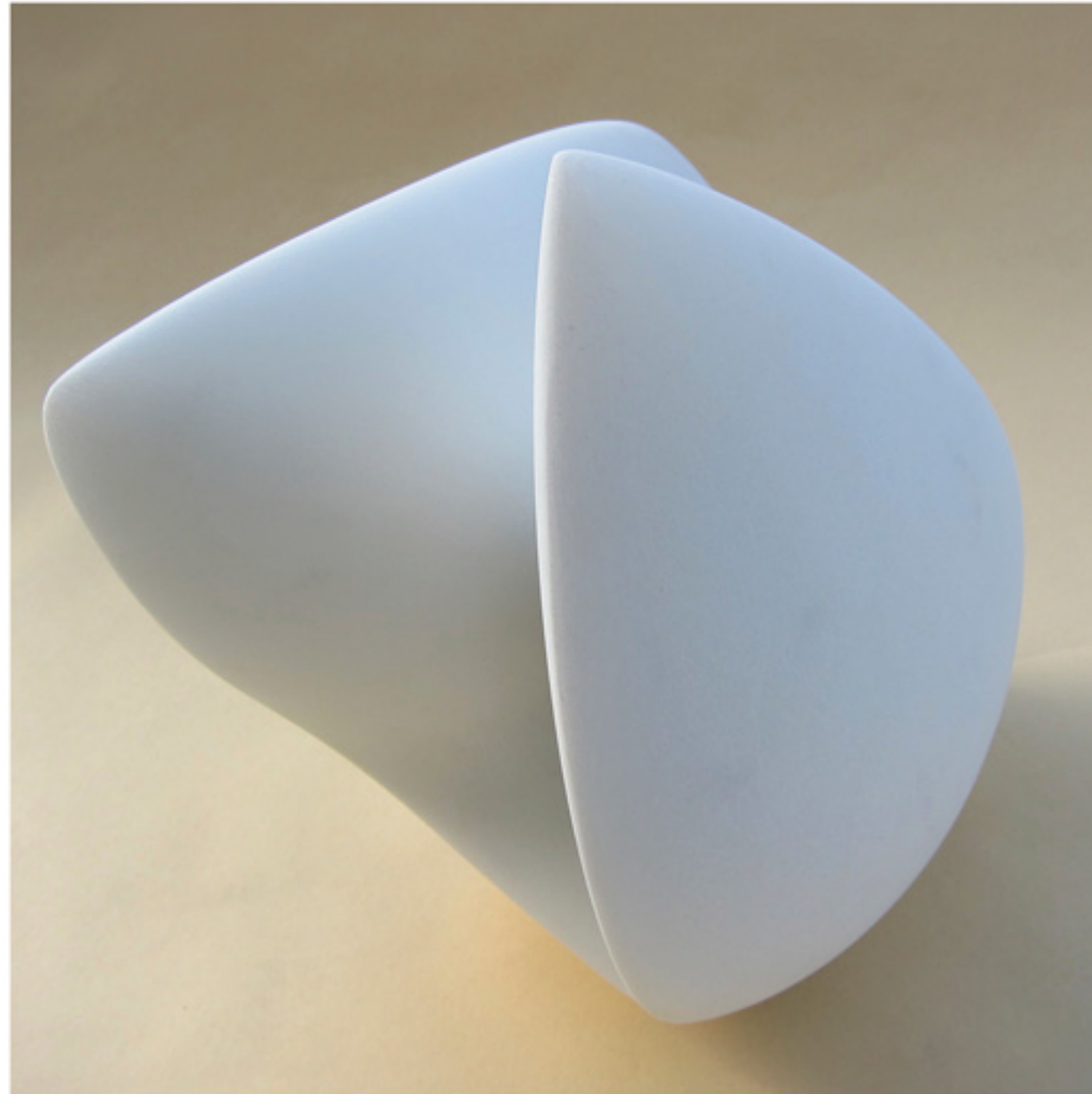
INTRODUKTION

The dynamics of the relationship between the two forms you often will find in my sculptures speak about the breaking away in a new direction while still anchored to the strong roots of my core self. My recent sculptures *Il Passaggio* and *Creation* expresses new knowledge or insight after a challenging period of time

Inger Sannes, December, 2013

"At Christopher Newport University in Virginia, our job is to instruct and inspire -and there is nothing that instructs and inspires more powerfully than great art and great architecture. When I met Inger Sannes, I knew immediately that her energy, enthusiasm and enormous talent would create a stunning masterpiece to enrich our beautiful campus. Inger Sannes describes this extraordinary creation as "movement, collaboration and protection; with one form seeming to protect the other, joined but separate and unique." She has captured the essence of our unique relationship with our students as we guide them through this very important phase of their lives and prepare them to emerge as leaders in the world"

Presiden Paul Tribble, November 2008
Christopher Newport University
Newport News, Virginia



Oslo Innovation Award given to the most innovative company during Oslo Innovation Week in the City Hall of Oslo (since 2008). ALGETA got the prize 2013



Innovation is enabled when there is a dynamic relationship between intuition/creativity (organic form) and drive/direction (structure in the form)



ELEMENTS, Afyon marble, Turkey (155 x 130 x 62 cm high, base 90 cm high)
Above Studio Sem, Photo Keara Mc Martin. Right Edsvik Konsthall, Sollentuna, Stockholm





Elements at Edsvik Konsthall, Sollentuna, Stockholm
Photo right, Janne Jälking, Sweden





Elements at Midtåsen Sculpture Park, Sandefjord, Norway





ELEMENTS, small (24 cm high x 40 x 40), white Statuario marble.
Number 1 of 3 different versions.



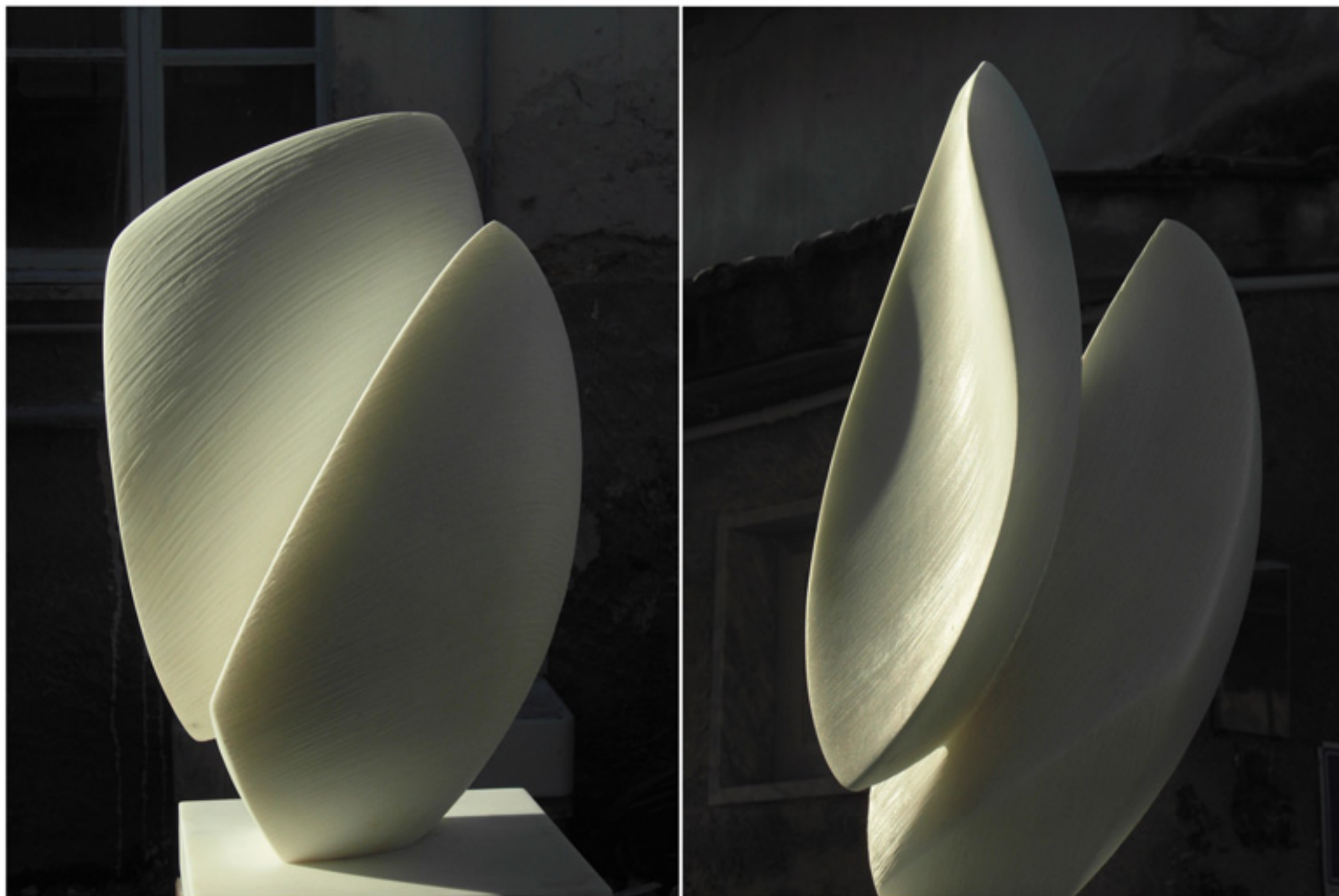
II

ELEMETS
small, number 2



ELEMENTS
small, number 3





NEW ELEMENTS, model for Christopher Newport University, 60 cm high, Statuario marble.
Right, working on the monument 2008. Photo right, Sebastiano Leta, Italy





ELEMENTS (4 meter high, 12 ton), white Carrara marble
CNU, Virginia, USA, 2008. Photo, Jesse JHutch Hutcheson, Newport News, USA



Photo Alexander Kravets, Newport News, USA

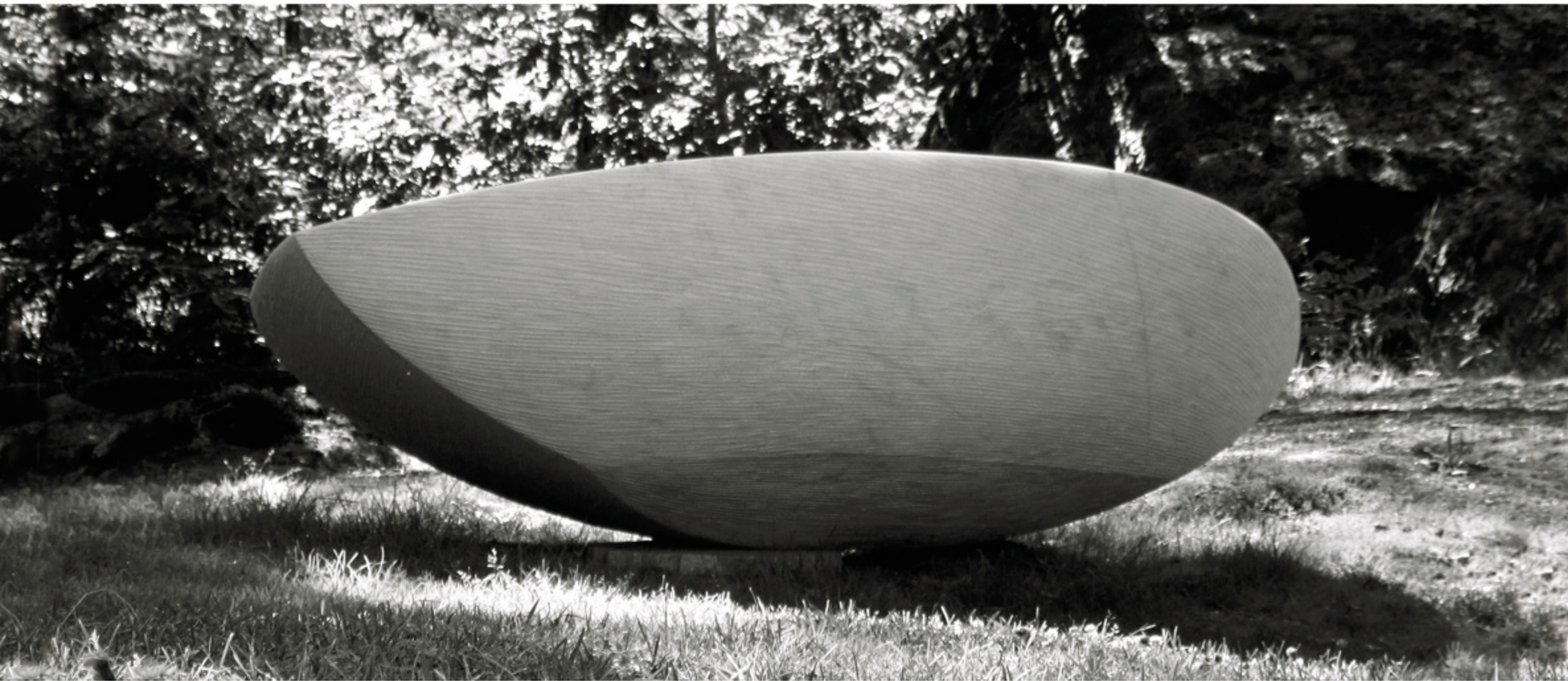




TIDEVANN - TIDE (230 cm long x 140 x 70)
White Carrara marble . Alva 11 months climbing, Edsvik Konsthall, Stockholm, Sweden



TIDEVANN
Edsvik



TIDEVANN
Midtåsen



TIDEVANN
Above Edsvik, right Midtåsen



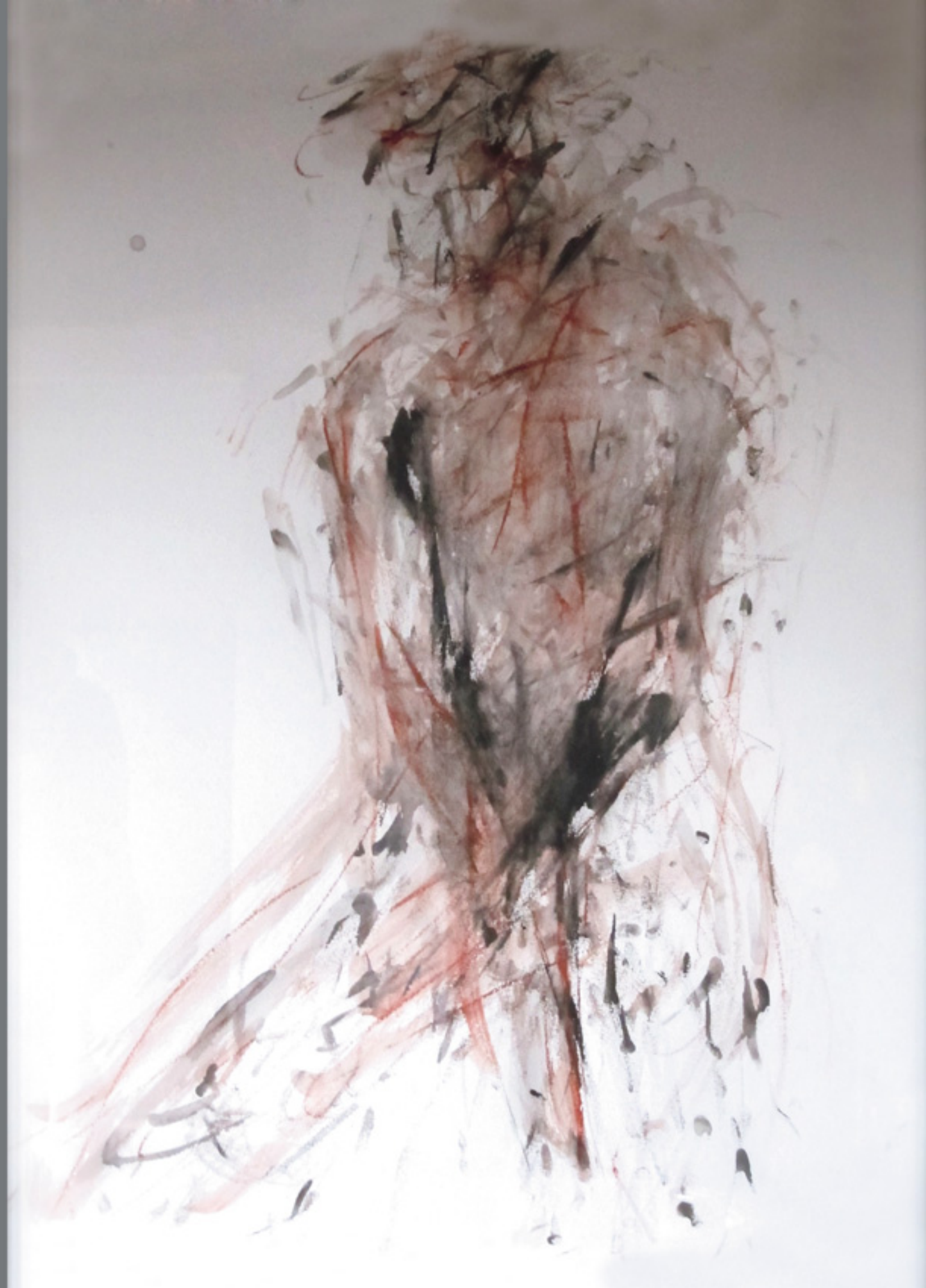




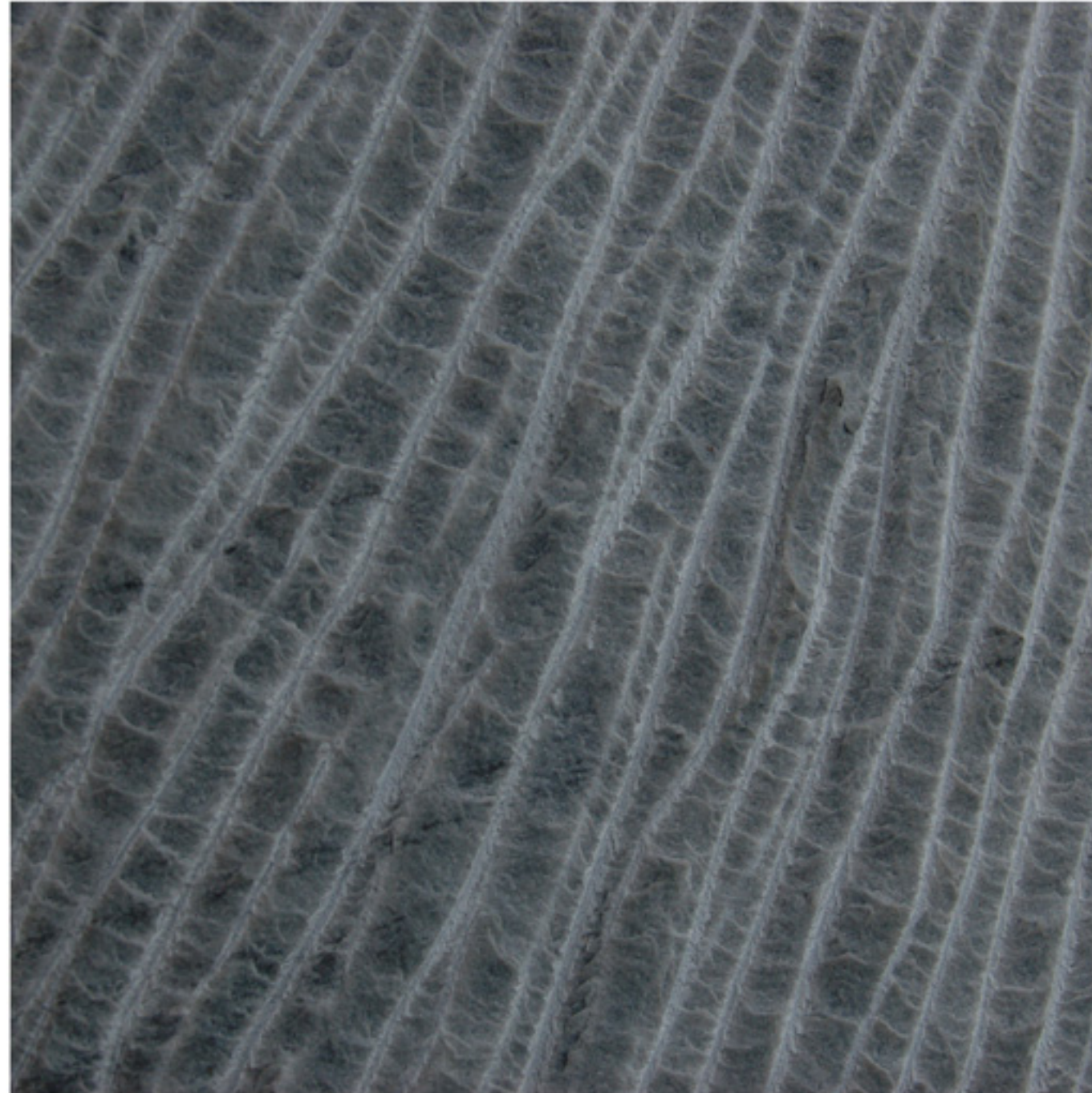
ELLIPSE
2 meter high, white Estremos marble. Midtåsen Sculpture Park, Sandefjord



Above Ellipse, Midtåsen,
right ink drawing, 79 cm x 61







SOURCE (2 meter high, base included), Bardiglio mable, Italy
Landsort, Stockholm, Sweden



VESTITA (dressed), Statuario marble from Monte Altissimo, Toscana, 2 meter high.
St Agostino, Pietrasanta, Italy. Photo Dirk Wilhelm, Germany. Ink drawing, right, 90 cm x 70





Vestita above



Inner and Outer Space

During the winter 2012-2013 I was joining the Art & Science project "Inner and Outer Space - Our Universe expands" with scientists in astronomy and astrophysics from the Oskar Klein Centrum at Stockholm University and artists connected to Edsvik Konsthall

34

IL PASSAGGIO express the arrival to a new level of insight - a "paradigm shift", often after a painful transformation

Dark wholes, dark energy and dark matter occupy 70-80% of the Universe. "Dark", because we do not really know what it is

In Life and Art I am exploring the unknown, "the dark". The more I learn the less I realize I know





Above, ink drawing.
Previous page, Il PASSAGGIO (130 cm x 90 x 90), Carrara marble



Hedda 7 months exploring Il Passaggio at
Edsvik Konsthall, Stockholm



II PASSAGGIO

Above ink drawing, exhibited at Pangolin Gallery, London, England, 2012



II PASSAGGIO
Midtåsen Sculpture Park, Sandefjord, Norway



IL PASSAGGIO

(38 cm x 35 x 20) at the Swedish Institute in Rome, Villa Borghese, Italy, 2011



CREATION reflects the creation of the Universe from vacuum or nothing, moving inside and outwards at the same time. Edsvik, Stockholm, Sweden and Midtåsen, Sandefjord, Norway





CREATION
Ink drawing, 56 x 76 cm



CREATION is about entering an empty space where new forms and expressions suddenly appear from nowhere



Liam (9 years) and Hedda (7 months)
exploring,
Spring 2013



At Cava Querciola, Carrara, 2011

Inger is born in Sandefjord/Tjølling Norway and lives since 18 years in Stockholm, Sweden and Pietrasanta, Italy. She creates her sculptures at Studio Sem in Pietrasanta. Inger is member of Billedhuggerforeningen, Norway, Skulptörförbundet and KRO, Sweden and The Royal British Society of Sculptors, England. www.inger-sannes.com